

Product specifications for hinged doors



Dimension limits

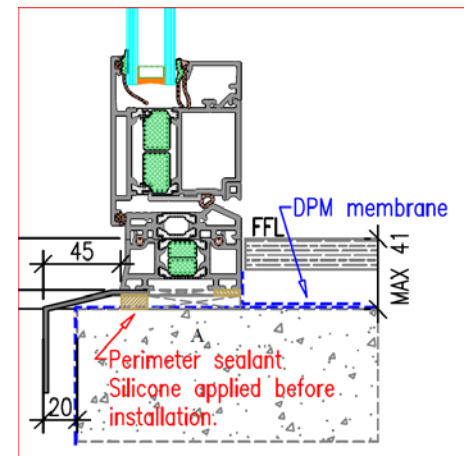
- Frame widths from 600mm to 4000mm
- Frame heights from 1500mm to 2700mm
- Pane widths from 600mm to 1400mm
- Pane areas up to 3.0m²
- Heat mirror film has a maximum width of 2000mm

Aluminium profiles:

- Thermally broken profiles
- Powder coated to a selection of standard colours

Folded aluminium flashing

- To allow 20mm set back from outside face of finishes
- Powder coated to match door frame



Performance

- See Product brochure for all performance specifications

Glass specification

- All glass is toughened and heatsoaked to British (BS) and European (EN) standards
- All spacers are of BLACK warm edge design and units are filled (90%) with Argon gas
- Glass can be ordered as "Enhanced" (extra strong), "Laminate" (extra safe), "Low Iron" (extra clear), "Privacy" (obscure to view) or with "Heat Mirror Film" (extra insulated with solar coating to control heat gain from the sun)
- The table below shows the glass specification depending on the dimensions input when calculating a quote.

Glass Type	Specification	U-value W/m ² K	G-value (solar) %	Light transmit tance %	Limits and constraints	Design wind loads KN/m ²
Standard	4mm / 20mm / 4mm	1.8	70	74	Up to a height of 2500mm	Up to 1.2
Enhanced	6mm / 16mm / 6mm	1.8	69	73	Over 2500mm	Up to 1.6
Laminate	6mm / 16mm / 13.5mm (pvb)	1.8	61	69	N/A	Up to 1.6
Heat mirror film	Film within the 24mm Argon filled cavity	1.5	39	57	N/A	N/A